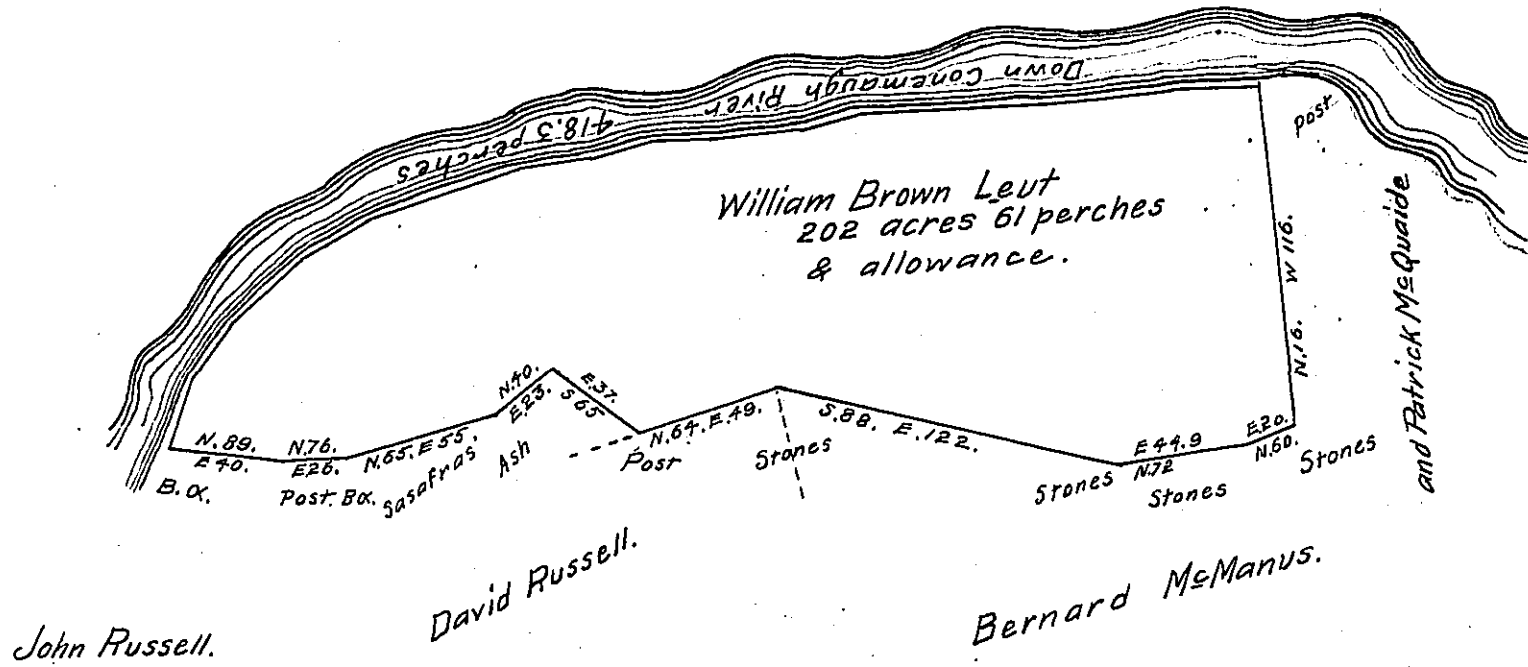


*Courses & Distances  
down Conemaugh River  
beginning at a post thence.*

585	W 199.
573 1/2	W 140
571	W 420
576	W 70.0
565	W 20.0
572	W 36.0
577	W 17.0
564	W 20.0
571.	W 26.0
560.	W 18.0
553	W 64.0
538	W 32.0
522	W 24.4
539	W 15.0
Perches 418.3	



In pursuance of an application dated 3<sup>d</sup> of April 1769 No. 1590 granted to William Brown Leut. Surveyed May 30<sup>th</sup> 1828 the above described tract of land containing two hundred and two acres ~~one hundred~~ and Sixty one perches and the allowance proportioned at six per cent for roads &c Situate on the Conemaugh River in Derry Township in the County of Westmoreland

Gabriel Hiester Esqr.

S. L. Carpenter D. S.

Surveyor General of Penn'a

N.B. The above tract of land was surveyed in pursuance of an application granted to Robert Swaney No. 3435 dated 13<sup>th</sup> June 1765.

S. L. C.

IN TESTIMONY that the above is a copy of the original remaining on file in the Department of Internal Affairs of Pennsylvania, made conformably to an Act of Assembly approved the 16th day of February, 1833, I have hereunto set my Hand and caused the Seal of said Department to be affixed at Harrisburg, this twenty eighth day of July 1908.

Henry Howell

Secretary of Internal Affairs.